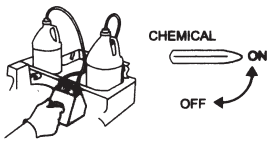


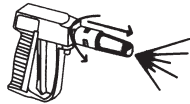
No-Touch Restroom Cleaning

1



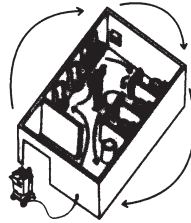
Turn chemical valve on.
Check tank levels.
Optional: Dust with blower

2



Pull nozzle out to low pressure mode.
Rotate nozzle to fan pattern.

3



(Test chemicals on surfaces before using.) Inject chemicals on fixtures, walls and floor. Start at the nearest fixture traveling in a circular pattern.

4



7 sec.
Chemical Injection

Apply cleaning solution to fixtures.

5



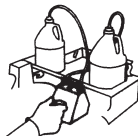
3 sec.
Chemical Injection

6



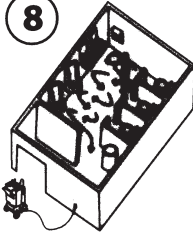
2 sec. Chemical Injection
(7 sec. for high pressure rinse)

7



Turn chemical valve off.

8



Rinse chemical from line onto floor.
Optional: Manually brush heavily soiled areas.

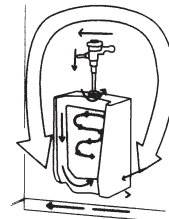
9



Push nozzle in to high pressure mode and rotate to a pinpoint pattern for rinsing.

10

15 sec.
High pressure rinse



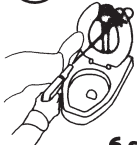
Rinse fixtures from top to bottom.

11



6 sec.
Rinse plumbing and seat top clean.

12



6 sec.
Lift seat. Clean hinges and seat bottom.

13

Rim Shot



4 sec.
Place nozzle under rim and rotate.

14

Slam Dunk



4 sec.
Spray into bowl.

15



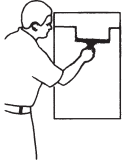
10 sec.
Spray bottom and base.

16



Loop hose onto horns while drying with towel.

17



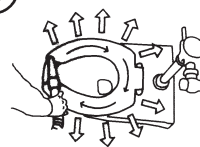
Squeegee mirrors and flat surfaces.

18



Vacuum floor dry starting furthest from the door.

19



Optional: Blow dry flush handles and toilet seat tops for immediate use.

Machine Maintenance

1 Inspect Filters

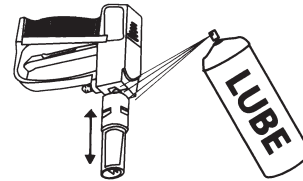


Inspect filters for dirt. If found, remove filter, clean and reinstall.



Inspect HEPA filter for soils. If soiled, remove and replace.

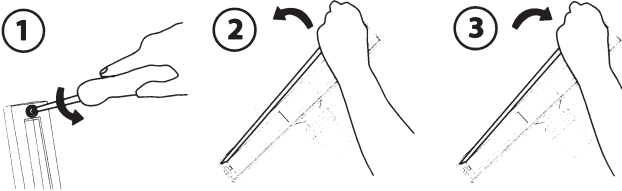
2 Lubricate spray nozzle



Every week, lubricate nozzle with penetration oil. Nozzle must rotate freely forward and backwards.

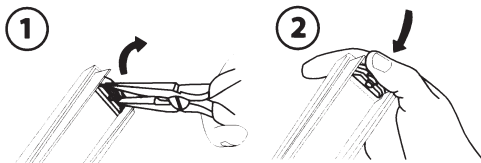
3 Replace worn squeegee blades and wheels

Replacing blades

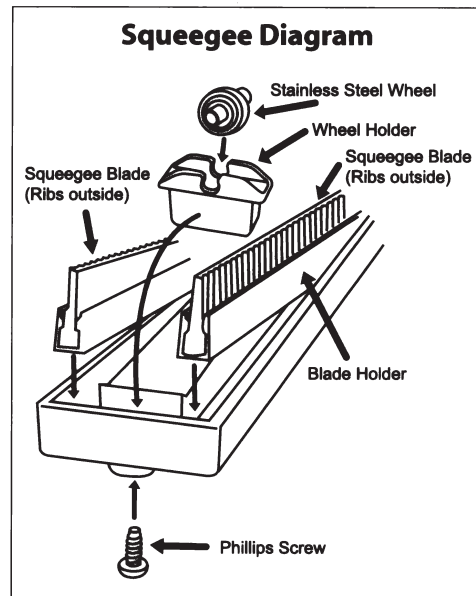


1. Remove wheel holder with a Phillips head screw driver.
2. Pull the blade holder up and out of the squeegee head.
3. Press the new blade and holder back into place and replace the wheel holder.

Replacing wheels

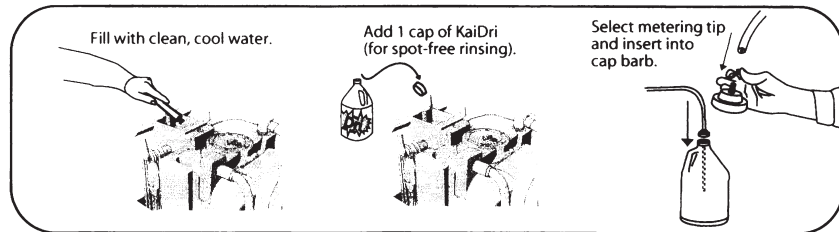


1. Using needle nose pliers, pull the old wheel out of the wheel holder.
2. Press the new wheel into the wheel holder until it snaps into place.

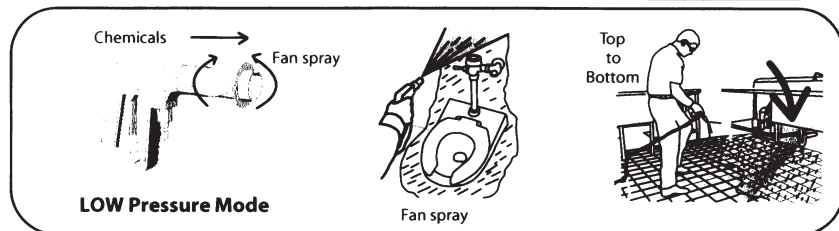


S.I.M.P.L.E. No-Touch Cleaning[®] Process

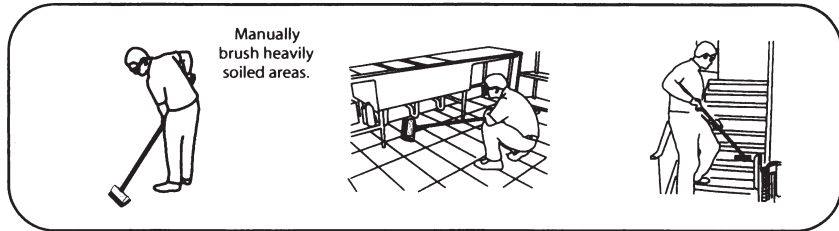
Set-up



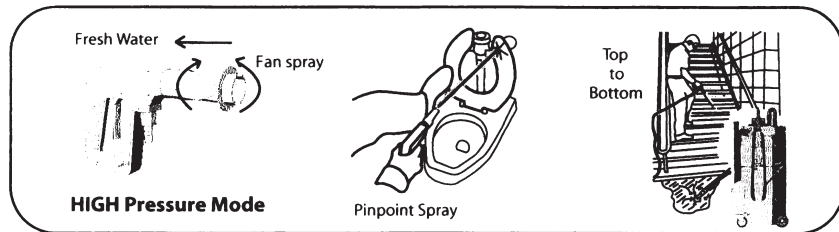
Inject chemicals



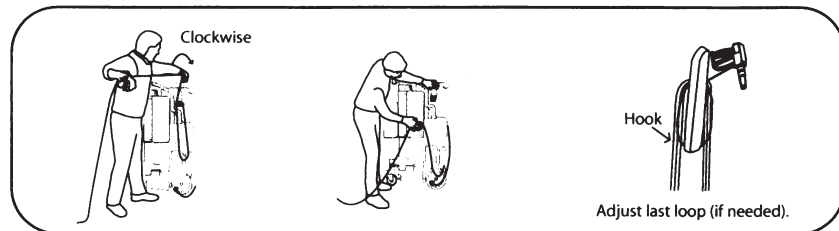
Manual brush (optional)



Pressure wash and rinse



Loop spray line



Extract and dry

